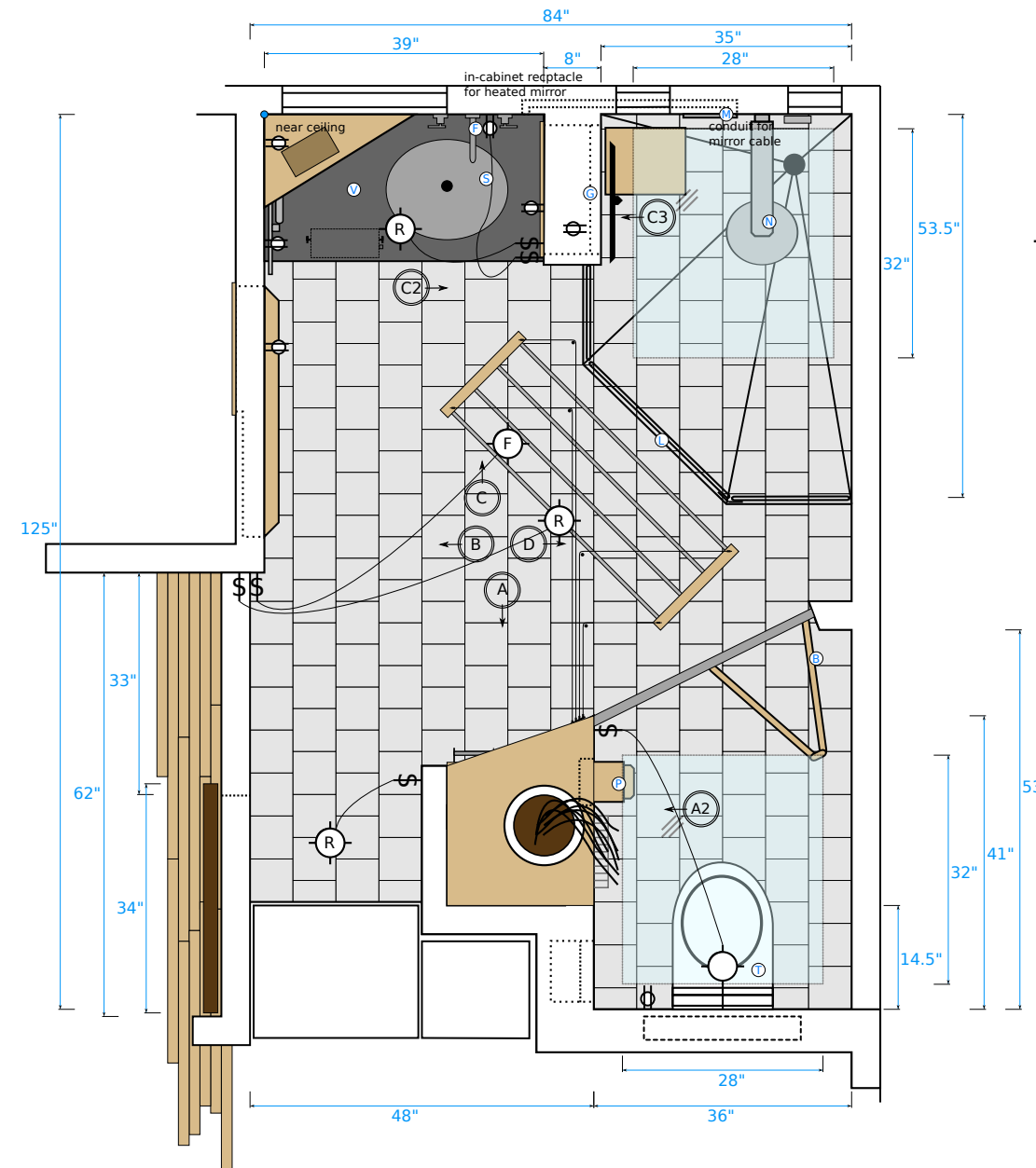


Bergstrom/Fujimoto
1723 Cabrillo #A

Bathroom, floor plan



Fixtures / appliances

- B - bi-fold door: Knappe and Vogt BIF series hardware
- D - sliding barn door: DIY (mimic Baldur)
- F - faucet: Kohler Purist chrome wall mount K-T14413-4-CP
- G - single-pane glass back for medicine cabinet
- L - glass shower transom: US Horizon 135 transom clip C-PMT135-C
- M - mirror: ClearMirror heated; 48" x 7.5"
- N - showerhead: Nebia; late 2016 deliv.
- P - toilet paper roll holder, DIY; 6" w x 8" d x 72" h
- S - sink: Native Trails Classic in Brushed Nickel #CP5568
- T - toilet: Toto Aqua CWT418MFG-2#01
Toto S300e Washlet SW574#01
Toto DuoFit in-wall tank WT151M / WT152M
- V - vanity: PaperStone Slate

Tile estimate

6x6 M64 Steam_3 10500 = 72.9 sq/ft
 floor = 84 x 125 = 10750